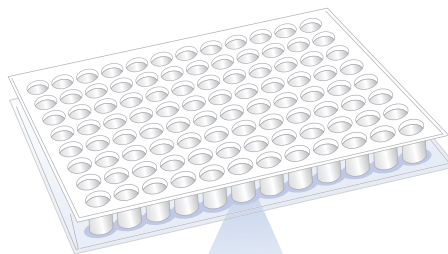
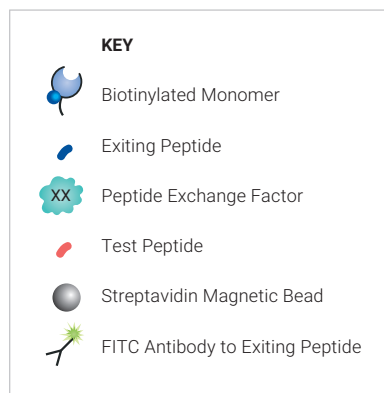


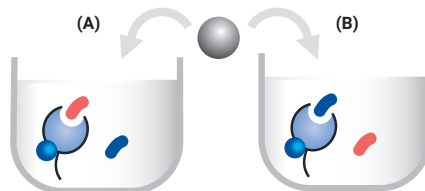
QuickSwitch™ Peptide Screening Assay Protocol



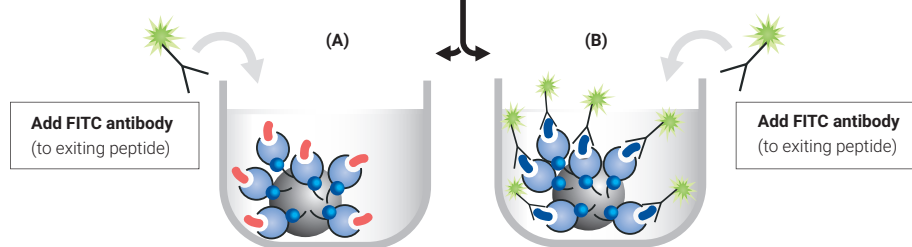
4 hr @ RT in dark

MHC binding peptides will displace exiting peptide on monomer (A).
Non-binding peptides will have minimal effect on exiting peptide on monomer (B).

MHC binding test peptide Non binding test peptide

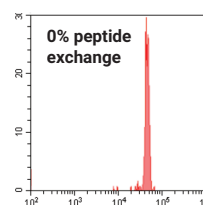
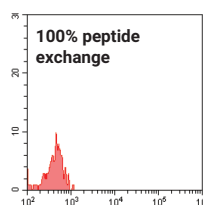


Shake 30 minutes Wash Incubate with antibody



Shake 45 minutes

Shake 45 minutes



For Research Use Only. Not for use in diagnostic procedures.