

Anti-Human ESYT1 (Internal) Polyclonal Antibody

CatalogID	MC-9547
Target Protein	extended synaptotagmin-like protein 1 (ESYT1)
Synonyms	ESYT1 Antibody, E-Syt1 Antibody, Extended synaptotagmin-1 Antibody, KIAA0747 Antibody, MBC2 Antibody, FAM62A Antibody
Host	ESYT1 antibody was produced in Rabbit
Clonality	Polyclonal
Immunogen Species	ESYT1 antibody was raised against Human
Antigen Type	Synthetic peptide
Immunogen	ESYT1 antibody was raised against synthetic 17 amino acid peptide from internal region of human ESYT1 / FAM62A. Percent identity with other species by BLAST analysis: Human, Chimpanzee, Gibbon, Monkey, Galago, Marmoset, Mouse, Rat, Bovine, Bat, Horse, Rabbit, Pig, Guinea pig (100%); Orangutan, Elephant, Panda, Dog (94%); Lizard (82%).
Specificity	Human ESYT1 / FAM62A. BLAST analysis of the peptide immunogen showed no homology with other human proteins, except ESYT2 (65%).
Epitope	Internal
Reactivity	Human (human tissues have been tested in IHC with FFPE)
Predicted Reactivity	Chimpanzee, Gibbon, Monkey, Mouse, Rat, Bat, Bovine, Guinea pig, Horse, Pig, Rabbit, Orangutan, Dog
Purification	Immunoaffinity purified
Presentation	PBS, 0.1% sodium azide.
Recommended Storage	Long term: -70°C; Short term: +4°C
Uses	IHC - Paraffin (10 µg/ml) (Optimal dilution to be determined by the researcher)
Size	50 µg
Concentration	1 mg/ml

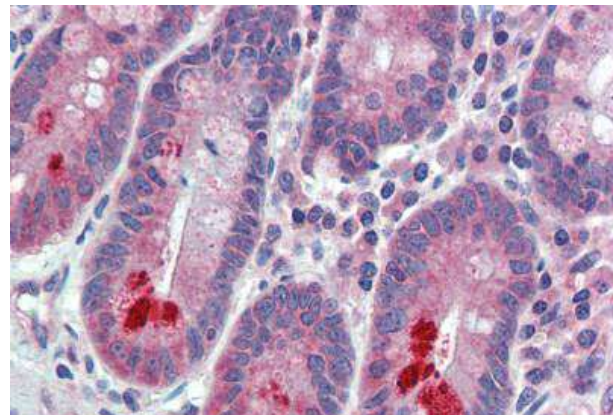
For research use only. Not intended for human, diagnostic, therapeutic, or drug use.

Immunohistochemistry



Anti-ESYT1 / FAM62A antibody MC-9547 IHC of human thyroid. Immunohistochemistry of formalin-fixed, paraffin-embedded tissue after heat-induced antigen retrieval.

Immunohistochemistry



Anti-ESYT1 / FAM62A antibody MC-9547 IHC of human small intestine. Immunohistochemistry of formalin-fixed, paraffin-embedded tissue after heat-induced antigen retrieval.