

## PAX6 Polyclonal Antibody

**CATALOG NO:** JM-3636R-100 100 µg

**HOST:** Rabbit

**IMMUNOGEN:** Synthetic peptide surrounding amino acid 303 of rat PAX6

**SPECIES REACTIVITY:** Human, Mouse, Rat

### FORMULATION:

0.5 mg/ml affinity purified rabbit polyclonal antibody in phosphate-buffered saline (PBS), pH 7.2, containing 30% glycerol, 0.5% BSA, 5 mM EDTA and 0.01% thimerosal.

**STORAGE CONDITIONS:** Store at -20°C. For long term storage, store at -70°C.

### DESCRIPTION:

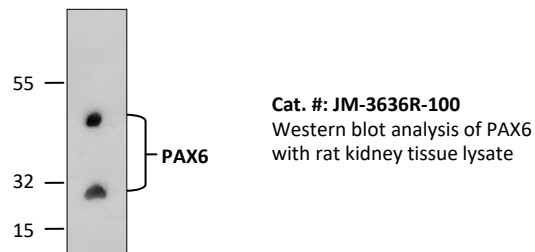
PAX genes encode nuclear transcription factors that may function as major controllers of developmental processes in both vertebrates and invertebrates. Mutations in murine PAX genes underlie three natural mouse alleles and several corresponding human syndromes (aniridia, foveal hypoplasia and Peters' anomaly). Murine PAX genes have been shown to be proto-oncogenes. Furthermore, human PAX genes have recently been demonstrated to play an influential part in some common human cancers such as brain tumors and lymphomas. All PAX genes encode a DNA-binding domain termed the paired domain and in addition some also encode a second binding domain--the paired type homeobox. PAX6 is involved in the early development of the optical vesicle and has been shown to interact with Six3, another important visual development protein.

### SPECIFICITY:

The antibody recognizes ~32 kDa and 47 kDa isoforms of PAX6 in samples from human, mouse and rat origins. Reactivity to other species has not been tested.

### APPLICATION AND USAGE:

The antibody can be used for Western blotting (0.5-4 µg/ml). However, the optimal conditions should be determined individually.



**FOR RESEARCH USE ONLY! Not to be used on humans.**